

# EXAMPLE

## XYZ CONSTRUCTION SITE SPECIFIC WORK PLAN (SSWP)

FOR

### X-999 SUMP PIT ABANDAMENT SITE RESTORATION PROJECT

(Contract No. FBP-14-SC-000XXXX, Release No. XX)

Rev. 1

Dated: 02/15/2014

Contractor Review and Approval By:

\_\_\_\_\_  
John F. Doe, Project Manager

\_\_\_\_\_  
Date

\_\_\_\_\_  
James Q. Doe, Quality Representative

\_\_\_\_\_  
Date

\_\_\_\_\_  
Frank P. Doe, Health & Safety Officer

\_\_\_\_\_  
Date

Table of Contents

- 1. GENERAL OVERVIEW .....4
- 2. GENERAL PREREQUISITES,PRECAUTIONS,LIMITATIONS & PERMITS .....6
- 3. STATEMENT OF WORK .....10
  - 3.1 MOBILIZATION .....10
  - 3.2 STORM WATER PUMPING & DISPOSAL .....11
  - 3.3 ISOLATE AND REMOVE NON-FUNCTIONING PUMP AND MOTOR ASSEMBLY FROM SUMP PIT .....142
  - 3.4 BACKFILL CONCRETE FOUNDATIONS .....142
  - 3.5 SITE GRADING .....15
  - 3.6 REVEGETATION.....16
  - 3.7 DEMOBILIZATION & CLOSE-OUT .....16
- 4. GENERAL REQUIREMENTS.....17
  - 4.1 ROLES & RESPONSIBILITIES .....17
  - 4.2 ORGANIZATIONAL CHART .....18
  - 4.3 SUB-TIER CONTRACTORS/VENDORS.....18
  - 4.4 STAFFING .....18
  - 4.5 WORK HOURS & SHIFTS .....19
  - 4.6 EQUIPMENT LIST .....19
  - 4.7 MATERIALS LIST .....19
  - 4.8 INSPECTION PLAN .....19
  - 4.9 WASTE MANAGEMENT.....19

**ACRONYM and ABBREVIATION LIST**

---

CTR	Contractor Technical Representative
FBP	Fluor/B&W Portsmouth (COMPANY)
GET	General Employee Training
GWMP	Generator Waste Management Plan
HASP	Health and Safety Plan
HHRB	High Hazard Review Board
IH	Industrial Hygienist
JHA	Job Hazard Analysis
LOTO	Lock-Out/Tag-Out
MSDS	Material Safety Data Sheet
NEA	Negative Exposure Assessments
OSHA	Occupational Safety and Health Administration
POC	Point of Contact
PPE	Personal Protective Equipment
RC	Radiological Controls
RCT	Radiological Control Technician
RAD	Radiological
PSWP	Project Specific Work Plan
QA	Quality Assurance
QAP	Quality Assurance Plan
STA	Safety Task Assignment
SOW	Statement of Work
WPC	Waste Package Certifier

**1. GENERAL OVERVIEW**

XYZ Construction (CONTRACTOR) has been contracted by FBP (COMPANY) to provide all labor, supervision, permanent materials, small tools and construction equipment required to: pump out existing containment structures, isolate and remove non-functioning pump and motor from concrete sump pit, backfill structure with approved backfill(dirt) and re-grade the X-999 site, to restore it to a safe and useable condition.

**ATTACHED REFERENCE DOCUMENTS**

Number	Title
XXXXXX-XXX latest revision	Job Hazard Analysis
XXXXXX-XXX latest revision	Health and Safety Plan
XXXXXX-XXX latest revision	Quality Assurance Plan
Attachment J-29	Fire Protection
FSS-XX-XX	Security Protocol
FBP-SM-PRO-00013-F04	Checklist Movement of Heavy Equipment
FBP-WM-PL-00038 latest revision	Generators Waste Management Plan
XXXXXX-XXX latest revision	Training Matrix
0001322-022 latest issuance	Project 2 week look-ahead
Attachment J-13	Environmental Health and Safety Requirements for On-Site Work (Revision 5)
XXXXXX-XXX latest revision	Hoisting and Rigging
	Lifting Plan 3
	Lifting Plan 4
	Lifting Plan 5

**SUPPLEMENTAL PSWP DOCUMENTS**

Number	Title
TBD	Asbestos Abatement Plan
TBD	Lead Abatement Plan

<b>FBP Project Contact Information</b>			
Name	Title	Phone	E-mail
Ben Example	Project Manager	(740) XXX-XXXX	ben.example@fbports.com
Joe Example	Contract Technical Representative	(614) XXX-XXXX	joe.example@fbports.com
Al Example	Construction Engineer	(740) XXX-XXXX	al.example@fbports.com
John Example	Lead Engineer	Ext. 1234	john.example@fbports.com
Bob Example	Superintendent	Ext.1234 Cell.	Bob.exempl
Jack Example	Safety Supervisor	(740) XXX-XXXX	jack.example@fbports.com
Bill Example	Safety Field Coordinator	(740) XXX-XXXX	bill.example@fbports.com
Jim Example	Quality Assurance Specialist	(740) XXX-XXXX	jim.example@fbports.com
Josh Example	Quality Field Inspector	(740) XXX-XXXX	josh.example@fbports.com
Jeff Example	Waste Engineer	(740) XXX-XXXX	jeff.example@fbports.com
Shane Example	Construction Supervisor	(740) XXX-XXXX	shane.example@fbports.com

<b>FBP Emergency Contact Numbers</b>	
Emergency	911 (from plant "land-line" / (740) 897-2444
Security	(740) 897-3452
Plant Shift Superintendent (PSS)	(740) 897-3025
Medical Services	(740) 897-5923
Safety	(740) 897-3596 / (513) 304-4458

## **2. GENERAL PREREQUISITES, PRECAUTIONS, LIMITATIONS, AND PERMITS**

### 2.1 Scope of Work Briefing:

Each individual assigned to this project will be briefed on the SOW, the major activities and associated hazards, and hazard mitigations utilizing this SSWP, JHA, HASP and applicable contract documents. This briefing will be detailed enough to give the worker an overview of the following:

- Scope of Work
- Project requirements and expectations
- Health and Safety requirements and expectations
- ISMS 5 Core Functions & Seven Guiding Principles
- Reporting requirements
- The Right to Stop Work
- Pre-and Post-Job Briefings
- Maintaining a Positive Questioning Attitude
- Emergency Preparedness

### 2.2 Training

Contractor will verify that each employee has received required training per the contract requirements prior to the start of work. A project specific Training Matrix will be used to verify employees' training and to confirm workers are qualified to perform their assigned work. Contractor will maintain the training matrix as required to reflect current worker training status, inclusive of the addition of personnel as the schedule requires.

### 2.3 Badging

After completing the required training each employee will be issued a site photo ID Badge.

### 2.4 Security Briefing

Each employee will participate in the WEMS security briefing. Each employee will read and be briefed on the project specific security protocol. Each employee will sign off on the protocol acknowledging he or she understands and will abide by the security requirements.

### 2.5 Site Preparation

Contractor will coordinate with FBP for required site preparations prior to mobilizing.

## 2.6 Personal Protective Equipment

Contractor will follow the PPE requirements as defined within the HASP, JHA and contract for each activity. At a minimum the following PPE is required: hard hat, safety glasses, safety boots and high visibility shirt/outer clothing or vest.

## 2.7 Field Walk Down

A field walk-down will be conducted by FBP and Contractor personnel prior to initial work start. This walk-down will be documented on the Attachment J-5 Contractor Daily Report.

## 2.8 Work Start Approval

Contractor will coordinate with FBP to obtain Work Start Approval from the Facility Manager(s). The Facility Manager or designee will authorize the Contractor to work in their facility by signing off on the project work order.

## 2.9 Inbound / Outbound Equipment Inspection:

Contractor will follow the Contract inspection requirements for inbound and outbound of equipment. Equipment will be inspected to ensure safety and compliance with regulatory and manufacturer's maintenance requirements. Inspections will be performed by the FBP Leased Equipment Manager or designee. A baseline radiological inspection will be performed as directed by FBP Radiological Personnel. An outbound survey and UE-5 form will be completed and approved prior to equipment leaving the site.

## 2.10 Pre-Job/Post-Job Briefing

**Pre-Job:** At the start of each work week (prior to the start of work) Contractor and FBP jointly will provide a full job briefing for the upcoming week of scheduled work activities (FBP-NSE-PRO-00002-F01, Rev.6). Each day forward contractor (with FBP presence) will give a daily briefing in the form of an STA (FBP-NSE-PRO-0002-F03) discussing the scope of work to be performed for that day, the associated hazards and hazard mitigations to be taken to execute the work.

**Post-Job:** At the end of each day Contractor (with FBP presence) will hold a post-job briefing, documenting feedback, concerns, change conditions and opportunities for improvement. This feedback will be addressed at that meeting or at a follow-up meeting.

## 2.11 Plant Radio:

A minimum of one plant radio will be provided by FBP to Contractor. FBP radios are able to access plant Emergency Frequencies and monitor site conditions. FBP will provide additional radios as needed.

## 2.12 Established Work Boundary:

Contractor will establish and maintain access control boundaries at the work site for the duration of the project. These boundaries will define the project work areas. Signage at the work site will identify the project name, minimum PPE requirements for entry, and project lead personnel with contact information.

### 2.13 RCT Pre-work Surveys:

Contractor will coordinate with FBP RCT to perform pre-work surveys prior to any Penetration/Excavation.

Prior to any work at an elevation of greater than eight 8 feet contractor will ensure that that FBP RCT has been contacted to perform pre-work surveys.

### 2.14 Lasers:

Contractor will register lasers with FBP IH Department/Laser SME and ensure proper postings re in place.

### 2.15 Nuclear Density Gauge

If it is determined that a nuclear density gauge will be needed the Contractor will notify FBP Radiological Controls department prior to bringing the unit onto the reservation.

### 2.16 Permits:

Contractor will request permits required for the performance of the work as described in the contract. Prior to the initiation of any permit-required work, Contractor will verify that the permit is complete, signed, and the work is ready to be performed; verification will be documented on Attachment J-5 Contractor Daily Report. For Excavation/Penetration permits contractor will coordinate a walk down of the scope within 2 weeks prior to the activity.

### 2.17 Hoisting and Rigging:

When Hoisting or Rigging is required, Contractor will complete a lift check sheet and/or submit a lift plan to FBP for approval prior to performing the work.

### 2.18 Transportation of Major Equipment:

Contractor will pre-walk travel routes to verify dimensional clearances and overhead obstructions prior to transporting major pieces of equipment. As required, Contractor will utilize spotters to assist in the movement of heavy equipment and oversized materials. Contractor will utilize FBP form FBP-FRM-00947 Checklist Movement of Heavy Equipment. Contractor will ensure proper notifications to FBP for deliveries and roadway traffic impacts and ensure all overhead obstructions are flagged.

### 2.19 Equipment and Tool Calibration:

Contractor will work with the FBP QA representative and the approved QAP to ensure all testing and measuring equipment have current calibration documentation prior to use.

### 2.20 Storage of Combustibles:

Storage of combustibles and refueling of equipment shall be in compliance with contract Attachment J-29, Fire Protection.

### 2.21 Current Documentation:



Contractor will ensure that the latest revision/issuance of documentation is maintained in the field. Should changes be identified, the documentation will be updated and a re-briefing will be conducted for all employees.

#### 2.22 QA Inspections:

Contractor will work closely with the FBP QA representative to ensure all required inspections occur per the QA plan, inclusive of the Installation Quality Plan (IQ), Operational Quality Plan (OQ) and Performance Quality Plan (PQ).

#### 2.23 Daily Reports and Inspections:

Contractor will complete the required daily reports and inspections (in addition to other contract required reports) as identified in the contract.

The following reports will be submitted to FBP as stipulated in the contract unless otherwise agreed to by FBP.

- Contractors Daily Report (J-5)
- Contractors Daily Equipment Inspection Report
- STA
- Full Pre-Job Brief

#### 2.24 SDS:

Contractor will submit SDS for all chemicals prior to bringing chemicals on site. Contractor will also provide the required storage and reporting for all chemicals brought on site as described in the contract.

#### 2.25 Hazard Communication

All employees and subcontractors shall be made aware of the OSHA 29 CFR 1926.59 Hazard Communication Standard for hazardous chemicals associated with project activities. Any employee/subcontractor has the right to know about any hazardous material that they may come in contact with while working on this project. A Safety Data Sheet (SDS) will be maintained onsite for each hazardous chemicals/materials brought onto the jobsite. The SDSs will be maintained at the jobsite by the contractor and available for worker review. All hazardous materials will be identified with the proper labeling in accordance with the SDS, and OSHA 29 CFR 1926.59. Per J-13 SDS must be submitted 15 days in advance of the chemical arriving onsite.

#### 2.26 Waste Management:

Contractor will work with FBP's Waste Engineer to ensure compliance with the GWMP per contract requirements.

#### 2.27 High Hazard Work

Contractor will ensure the following High Hazard Work will not be performed prior to the review and approval of the High Hazard Review Board.

- Electrical – electrical work requiring an energized electrical work permit over 50V or a permitted lockout/tagout 480V or higher.
- Excavating and Penetrations (permit required)
- Elevated Work – Over 6’ from the adjacent working surface that requires Personal Fall Arrest System (PFAS) as defined in FBP-OS-PRO-00020 – Fall Prevention and Protection
- Hoisting and Rigging- Critical lifts requiring a critical lift plan
- Radiological and Chemical (Rad requiring an ALARA review & Chemical for high concentration acids, caustics (>10% concentrations)

2.28 Hold Points:

Supervisor will ensure Hold Points are signed off prior to moving forward with the work.

Hold Point

Supervisor shall verify that all personnel under their direct supervision have received the required training, project briefing and are qualified to perform their work assignments as stipulated in the contract. Hold point approval shall be documented on “Attachment J-5 (Contractor Daily Report)”

_____	_____
Contractor Supervisor	Date
_____	_____
FBP Supervisor/CTR	Date
_____	_____
FBP Project Manager or Designee	Date

**3. STATEMENT OF WORK**

The major work activities are identified below to provide a basic understanding of the approach and execution methods and means to accomplish the work. References to safety controls and mitigators are in Job Hazard Assessment (JHA) (Submittal no. 000XXXX-YYY) are denoted, by listed activity.

NOTE: Work activities may be sequenced in other than the listed order to safely accomplish the work, if necessary.

**3.1 MOBILIZATION**

PREREQUISITES, PRECAUTIONS AND LIMITATIONS -

- Ensure SSWP, JHA, and other required submittals identified in J-8 are submitted and status B at a minimum prior to mobilization.
- Obtain written FBP approval prior to mobilization
- CTR has provided direction for authorization to access facility(s).
- Ensure employees and sub-tier employees are properly trained, badged, and been provided FBP site orientation, as outlined in applicable training matrix

- Ensure Construction Equipment and Vehicles are Rad surveyed and inspected upon entry into the facility ensure FBP equipment manager has been notified for inbound equipment inspection.
- Contact RADCON for survey's prior to any ground disturbance

## PERMITS –

- None

**Competent Personnel-**

- Equipment Operator
- Spotter

## JHA REFERENCES (XYZ-JHA 14-0283) –

- 0283-1 – Struck by vehicle or falling object
- 0283-1 – Musculoskeletal injury
- 0283-1 – Pinch Points
- 0283-1 – Overhead hazards
- 0283-1 – Stop work authority
- 0283-1 – Inclement weather
- 0283-1 – Emergency event
- 0283-1 – Slips, Trips, and Falls

## ACTIVITY DESCRIPTION –

3.1.1 Company will mobilize crew, subcontractor crews, materials, tools and equipment to the site and stage all items within the confines of the site boundaries. A Case 580N backhoe, or equivalent, will be delivered on flatbed trailer, towed behind 1-ton pickup. Off-loading will be by a trained equipment operator. Hand tools, pump, and generator will be off-loaded and staged on site using forklift. Due to anticipated duration on site, no trailers will be mobilized.

3.1.2 Coordinate with CTR to obtaining mowing services for all planned areas of cut and fill.

3.1.3 A perimeter barrier will be installed using T post and plastic construction fencing to keep unauthorized personnel from the work area. The construction area will be posted with proper signage. A designated smoking area will be identified and posted as designated smoking area.

**3.2 STORM WATER PUMPING & DISPOSAL**

## PREREQUISITES, PRECAUTIONS AND LIMITATIONS -

- Equipment Training (Pump)
- Ensure water quality is acceptable for disposal

## PERMITS –

- Confined Space Entry (if required for access into foundations)

**Competent Personnel-**

- Industrial Hygienist (IH)
- Confined space competent person
- Confined space entrant/attendant

## JHA REFERENCES (XYZ-JHA 14-0283) –

- 0283-2 – Musculoskeletal Strains and Sprains

- 0283-2 – Fire (Flammables)
- 0283-2 – Noise
- 0283-2 – Lacerations
- 0283-2 – slips, Trips, and Falls
- 0283-2 – Inhalation
- 0283-2 – Fueling of equipment
- 0283-2 – Skin Irritation
- 0283-2 – Hazardous Atmosphere

ACTIVITY DESCRIPTION –

3.2.1 **Hold Point** – Ensure water has no oily sheen on the surface prior to pumping. Contact Environmental Management through CTR for approval to pump and dispose on site.

\_\_\_\_\_  
CTR or Designee

\_\_\_\_\_  
Date

3.2.2 Pump water using a 3” centrifugal pump to draw down and dispose of storm water collected in the existing concrete foundations. Discharge directly to the adjacent drainage ditch by means of a 3” discharge hose. **NOTE:** Should water quality dictate the need for containerizing the water, company will coordinate this effort through CTR to obtain required container for storage for disposal by FBP.

3.2.3 **Hold Point** – If access into the existing concrete containment structures is required to clean out the bottom slabs, a Competent Person will sample air quality within the lower portion of the structure(s) prior to personnel entry. FBP confined space program SME will determine if permitted or non-permitted confined space entry is required, subject to air monitoring results, and proper access/egress is in place.

\_\_\_\_\_  
CTR or Designee

\_\_\_\_\_  
Date

3.2.4 If required, personnel will enter the containment structures to clean out debris

**3.3 ISOLATE AND REMOVE NON-FUNCTIONING PUMP AND MOTOR ASSEMBLY FROM SUMP PIT**

**PREREQUISITES, PRECAUTIONS AND LIMITATIONS –**

- Equipment Training (backhoe)
- Personnel Training
- Contractor will complete a lift check sheet and/or submit a lift plan to FBP for approval prior to performing the work.
- Arc Flash Evaluation

**Permits-**

- LOTO
- Confined space
- Hoisting and Rigging

**Competent Personnel-**

- IH
- Hoisting & Rigging
- Equipment Operator
- Electrician
- Confined Space

JHA REFERENCES (XYZ-JHA 14-0283) –

- 0283-3 – Slips, Trips, and Falls
- 0283-2 – Musculoskeletal Strains and Sprains
- 0283-2 – Inhalation
- 0283-4 – Confined Space
- 0283-9 – Electric Shock
- 0283-11–Hoisting and Rigging

ACTIVITY DESCRIPTION –

3.3.1 LOTO **HOLD POINT**

Contractor Supervisor and FBP Supervisor/CTR shall ensure that locks and tags are properly installed on the applicable system.

\_\_\_\_\_  
Contractor Supervisor

\_\_\_\_\_  
Date

\_\_\_\_\_  
FBP Supervisor/CTR

\_\_\_\_\_  
Date

**Establish boundary per Arc Flash Evaluation**

HAZARD CONTROL	REQUIRED FOR STEP(S)
<p><b>Shock Hazard CAT 0 PPE per Arc Flash Evaluation EVAL-DE-2014-XXXX</b></p> <ul style="list-style-type: none"> <li>• NFPA 70E 2012 Protective Clothing, HR Category 0</li> <li>• Protective Footwear, electrical resistant</li> <li>• Protective Eyewear, non-conductive with rigid side shields</li> <li>• Gloves, low voltage with leather protectors</li> <li>• Coveralls, Natural Fiber</li> <li>• Ear Plugs</li> </ul>	2.3.1
<p><b>Work Boundary Areas per Arc Flash Evaluation EVAL-DE-2014-XXXX</b></p> <ul style="list-style-type: none"> <li>• Arc Flash Boundary: 42”</li> <li>• Limited Approach Boundary: 42”</li> </ul>	2.3.1

**Perform System Isolation Verification for LOTO of pump power supply.**

- **Inspect Multi-meter to be a Class III or IV and rated for the voltage being tested**
- **Don PPE per Arc Flash Evaluation**
- **Verify digital multi-meter is functional with known source**
- **Verify zero voltage (AVT)**

- **Verify digital multi-meter is functional with known source**

**3.3.2 Hold Point** – For access into the sump pit, IH will sample air quality within the lower portion of the structure(s) prior to personnel entry. FBP confined space SME will determine if permitted or non-permitted confined space entry is required, subject to air monitoring results, and proper access/egress is in place.

_____	_____
Competent Person	Date
_____	_____
FBP Supervisor/CTR	Date

**3.3.3 Contractor personnel shall enter sump pit and perform Absence of Voltage Testing to Confirm LOTO**

**Hold Point Verify AVT completed**

_____	_____
Competent Person	Date
_____	_____
FBP Supervisor/CTR	Date

**3.3.4 Contractor personnel shall disconnect the identified electrical supply to the motor.**

**3.3.5 HOLD POINT** Contractor will complete a lift check sheet and/or submit a lift plan to FBP for approval prior to rigging or hoisting the pump/motor assembly.

_____	_____
Competent Person	Date
_____	_____
FBP Supervisor/CTR	Date

**3.3.6 Contractor shall attach approved lifting fixture to pump/motor assembly, remove anchor bolts and lift assembly from sump pit utilizing lifting eye on backhoe.**

**3.3.7 HOLD POINT** When specific activities requiring LOTO are completed and LOTO is no longer required, THEN Supervisor shall ensure that locks, tags have been removed once in safe configuration.

_____	_____
Competent Person	Date
_____	_____
FBP Supervisor/CTR	Date

**3.4 BACKFILL CONCRETE FOUNDATIONS**

**PREREQUISITES, PRECAUTIONS AND LIMITATIONS -**

- Notify WEMS Security of scheduled truckloads of import materials
- Ensure Delivery Drivers are briefed to security plan and have correct PPE
- Ensure additional Escorts are available for delivery drivers
- All site personnel to wear reflective safety vests due to increased truck traffic

**PERMITS –**

- None

**Competent Personnel-**

- Industrial Hygienist

## JHA REFERENCES (XYZ-JHA 14-0283) –

- 0283-4 – Flying Particles
- 0283-4 – Caught Between
- 0283-4 – Concrete Burns
- 0283-4 – Respirable Dust
- 0283-4 – Mobile Equipment
- 0283-4 – Trips, Slips, Falls
- 0283-4 – Tip Over

## ACTIVITY DESCRIPTION –

3.4.1 CONTRACTOR will import lean concrete mixture (slurry) materials from off-site source. Trucks (Cement Mixers) will be used to deliver and place lean concrete. Trucks will be escorted to the job site by Badged Escorts. Spotters will be used to back trucks into position for dumping loads.

3.4.2 Materials will be spread by constantly moving the chute to place lean mix to required fill height. Equipment and personnel will stay back from dumping area and behind the perimeter barrier while placing materials.

**3.5 SITE GRADING**

## PREREQUISITES, PRECAUTIONS AND LIMITATIONS -

- Requires RADCON survey prior to ground disturbance and during grading operations
- Perform/Review topographic surface conditions
- Equipment Operator training

## PERMITS –

- Excavation/Penetration Permit

**Competent Personnel-**

- Equipment Operator
- Spotter

## JHA REFERENCES (XYZ-JHA 14-0283) –

- 0283-4 – Flying Particles
- 0283-4 – Caught Between
- 0283-4 – Concrete Burns
- 0283-4 – Respirable Dust
- 0283-4 – Mobile Equipment
- 0283-4 – Trips, Slips, Falls

## ACTIVITY DESCRIPTION –

3.5.1 Surface area will be randomly staked or painted to delineate cut and fill requirements.

3.5.2 **Hold Point** - CONTRACTOR will ensure Rad survey is completed prior to disturbing ground surface, and that Excavation/Penetration Permit is in hand.

---

 CTR or Designee

---

 Date

3.5.3 A Case backhoe will be used to grade surface area to ensure proper drainage by creating flow paths to adjacent drainage ditches. Equipment Operator will be trained to the equipment being utilized. Surface cuts should not exceed 3" to 6" to accomplish this. Excavated soils will be used to re-contour ground surface, where needed, to promote drainage.

3.5.4 Back-drag entire surface area with bucket to obtain a smooth and uniform contoured surface.

### 3.6. REVEGETATION

PREREQUISITES, PRECAUTIONS AND LIMITATIONS -

- Additional Escorts needs for mobilized equipment
- Use dust masks or respirators when applying mulch
- Equipment training (Hydro Seeder)

PERMITS –

- None

**Competent Personnel-**

- Spotter

JHA REFERENCES (XYZ-JHA 14-0283) –

- 0283-5 – Caught Between
- 0283-5 – Lacerations
- 0283-5 – Respiratory Hazard
- 0283-5 – Flying Debris
- 0283-5 – Defective Equipment

ACTIVITY DESCRIPTION –

3.6.1 CONTRACTOR will mobilize a Hydro Mulch/Seeder to apply hydro mulch and seed to the disturbed areas. Truck will be escorted and flagger/spotter used to ensure personnel stay clear of operations.

### 3.7 DEMOBILIZATION & CLOSE-OUT

PREREQUISITES, PRECAUTIONS AND LIMITATIONS -

- RADCON Support for equipment surveys to release from site
- Equipment Operator training

PERMITS –

- None

**Competent Personnel-**

- Equipment Operator
- Spotter

JHA REFERENCES (XYZ-JHA 14-0283) –

- 0283-5 – Caught Between
- 0283-5 – Lacerations

ACTIVITY DESCRIPTION –

3.7.1 As work is completed, CONTRACTOR will demobilize; trucks, flatbed trailer, Bobcat, pump, portable generator, tools, Cement Mixers, and Hydro Mulch/Seeder. Coordinate with



FBP for RADCON support to survey and clear all items and equipment prior to removal from site. Equipment loading will be executed by trained Equipment Operator.

3.7.2 **Hold Point** - Perform final walk-down of site with CTR and obtain final concurrence of completion

\_\_\_\_\_  
 CTR or Designee Date  
 3.7.3 Hold Point – Material and equipment has been surveyed and UE-5 received.

\_\_\_\_\_  
 CTR or Designee Date  
 3.7.4 Hold Point – Equipment Manager Inspection prior to release.

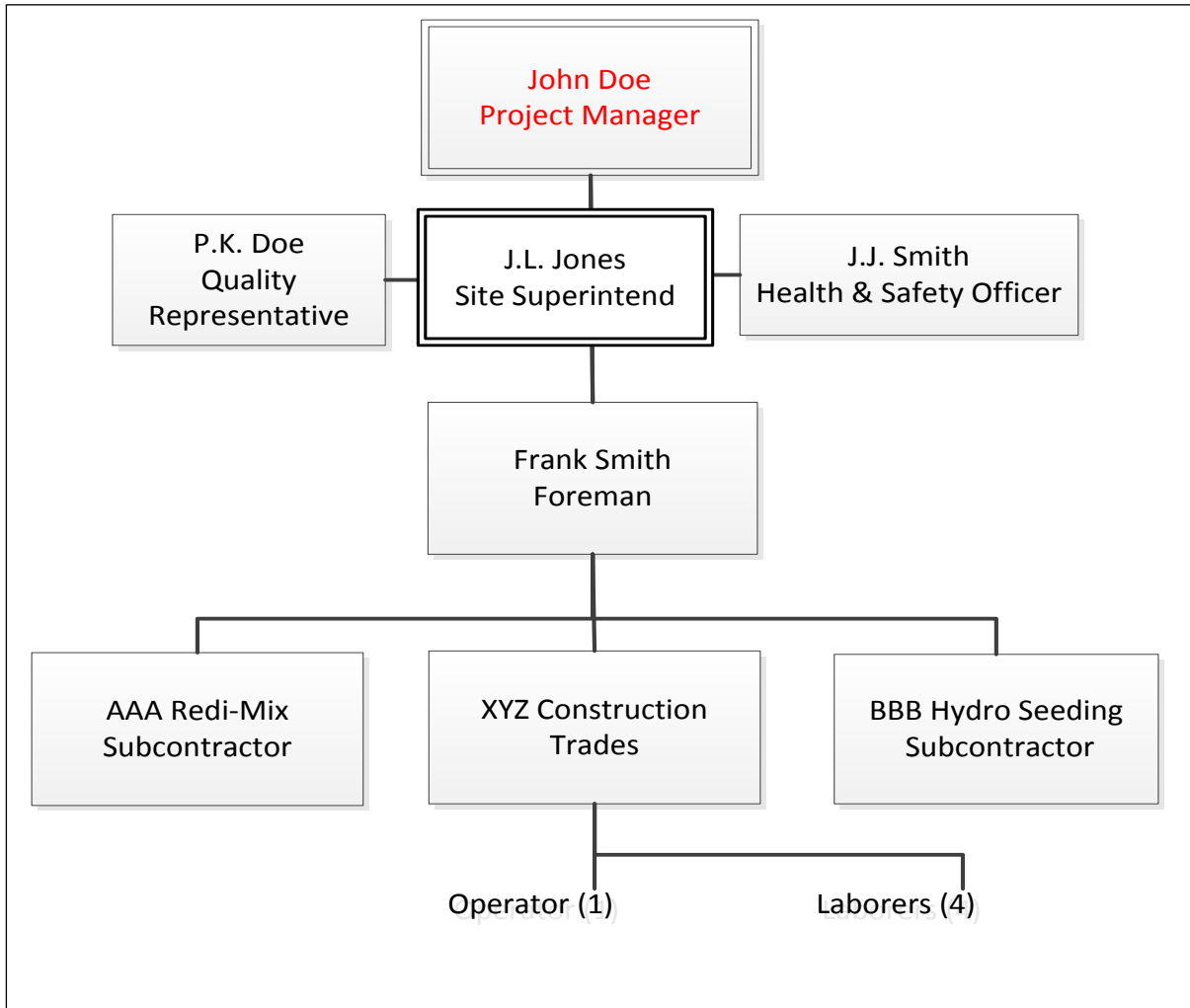
\_\_\_\_\_  
 CTR or Designee Date

**4. GENERAL REQUIREMENTS**

**4.1 ROLES & RESPONSIBILITIES**

<b>Project Manager</b>	<ul style="list-style-type: none"> <li>Responsible for the overall safety, quality, schedule and cost performance of the project.</li> <li>Ensures compliance with contractual requirements.</li> <li>Provides project status updates to FBP Project Manager.</li> </ul>
<b>Site Superintendent (John Doe)</b>	<ul style="list-style-type: none"> <li>Responsible for all on-site safety, quality and schedule performance.</li> <li>Leads and directs the daily site activities and crews.</li> <li>Attends FBP briefings and meetings. Provides direct oversight of sub-tier contractors and vendors while on site.</li> <li>Serves as the Quality Representative and main POC on this task.</li> </ul>
<b>Health &amp; Safety Officer (Jerry Smith)</b>	<ul style="list-style-type: none"> <li>Responsible for ensuring safety compliance with OSHA standards and site requirements.</li> <li>Performs field safety audits and inspections.</li> <li>Generates OSHA and contract specific documentation and reports.</li> <li>Mentors field crews in safe techniques to completing their tasks.</li> </ul>
<b>Quality Representative (Paul Doe)</b>	<ul style="list-style-type: none"> <li>Serve as the Quality Representative on this task</li> <li>Performs inspections of completed work activities to ensure compliance with SOW and applicable specifications.</li> </ul>
<b>Foreman (Tom Jones)</b>	<ul style="list-style-type: none"> <li>Front line supervisor providing direct supervision to craftsmen and equipment operators.</li> <li>Prepares daily reporting of field activities.</li> <li>Schedules worker assignments and coordinates field activities.</li> <li>Leads and documents daily STA reviews with site personnel.</li> </ul>

**4.2 ORGANIZATIONAL CHART**



**4.3 SUB-TIER CONTRACTORS/VENDORS**

XYX CONSTRUCTION will self-perform the following work scope; site survey, mowing, water pumping, anchor bolt cleaning, foundation backfill, and site grading and contouring. Sub-tier contractors will perform the following activities/tasks:

AAA Redi-Mix – Lean Concrete Supply

BBB Hydro Seeding – Mulch and Seed Application

**4.4 STAFFING**

**XYX Construction**

Site Superintendent – 1

Health & Safety Officer – 1

Foreman – 1

Heavy Equipment Operator – 1

General Laborers – 4

**AAA Redi-Mix** Driver – 3

**BBB Hydro Seeding**

Operator/Driver – 1

Laborer - 1

**4.5 WORK HOURS & SHIFTS**

Work hours are from 7:00 AM to 5:30 PM Monday through Thursday. Only a Day Shift will be worked. Should overtime be needed to make-up for schedule delays, CONTRACTOR will submit for approval to work Friday(s) and/or Saturday(s).

**4.6 EQUIPMENT LIST**

- Case 580N Backhoe – 1
- Cement Trucks (Mixer) – (Vendor supplied for material deliveries)
- 10-Wheeler Dump Truck – (Vendor supplied for material deliveries)
- Portable Generator – 1
- 3” dia. Centrifugal Pump w/Discharge Hose – 1
- Electrical test meter

**4.7 MATERIALS LIST**

List of major permanent materials with identified long-lead items:

**Long-Lead Items:**

- None

**Major Materials:**

- Lean Concrete (1,500 PSI Mix)
- Imported Earth Fill (clean fill materials)

**4.8 INSPECTION PLAN**

At a minimum, quality inspections will be performed and documented at the following intervals:

- Site Survey
- Water quality prior to pumping
- After water removal to check foundation bottoms for debris
- During and after lean concrete placement
- Final grading and clean-up

**4.9 WASTE MANAGEMENT**

The only wastes being generated from this site will be debris collected from the containment structures and from site cleanup activities. Debris will be collected and containerized by the CONTRACTOR and left in open containers/packaging for inspection. FBP RADCON techs and Waste Packaging Coordinator (WPC) will check all

materials to be disposed of prior to disposal into dumpsters. Off-site disposal of garbage and debris shall be handled by COMPANY (FBP). CONTRACTOR personnel shall load debris and garbage into disposal containers once RADCON and WPC have cleared the materials for disposal.

Surface materials excavated during grading operations are being re-used for surface contouring on-site.

Wastewater disposal from flooded containment structures will be directly discharged to adjacent drainage ditch (*based on FBP determination of water quality*).

